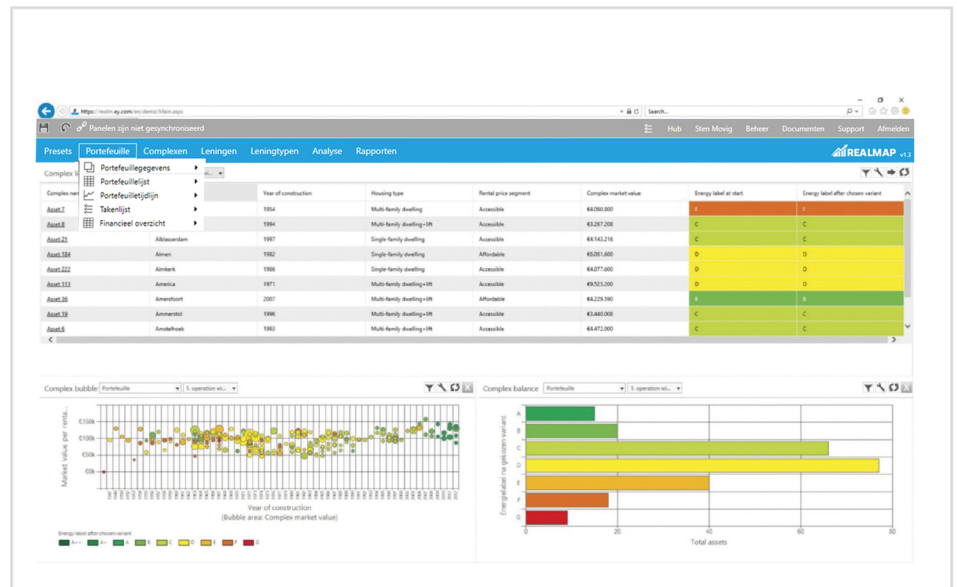
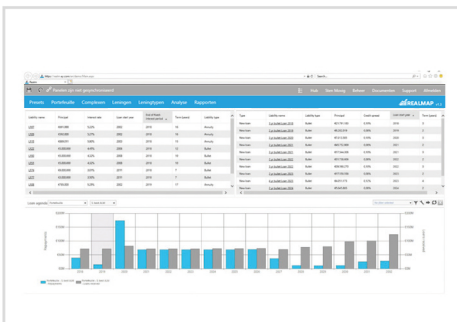


Digital Finance Realmap



Better decisions, more social impact

REALMAP addresses the need for integrated, effective and efficient asset and liability management tooling in the international real estate market.

REALMAP improves decision making and provides an optimised and integrated strategy resulting in maximum social or financial return.

The real estate market is under pressure due to new regulations and the need to further professionalise the decision making process. Currently, decision making related to asset and liability management is mostly not an integrated process but a process where substantial “manual labour” is involved. REALMAP enables real estate companies to operate more cost efficient and make better decisions.

REALMAP is a unique combination of expert services and tooling to realise portfolio management in an integrated environment.

REALMAP optimises the property and loan portfolio given relevant regulation and the real estate companies’ own strategy. This results in an integrated view of the optimal portfolio strategy to the extent that maximum social or financial benefit is created.

Furthermore, REALMAP enables real estate companies to assess the feasibility of the sustainability improvement of real estate.



**THE FUTURE OF
EUROPE'S DIGITAL
INNOVATION**

eitdigital.eu
f o i n t w @EIT_Digital



EIT Digital is supported by the EIT, a body of the European Union

Competitive Advantages

- Integrates the two worlds of asset and liability management;
- Optimisation engine based on proven technology and mathematical algorithms;
- REALMAP is web based and performs a real time optimisation instead of simulated time consuming calculations;
- Part of the result is a detailed transition plan for the asset portfolio as well as the liabilities portfolio;
- REALMAP stimulates cooperation between the different departments within the organisation and shortens the decision cycles;
- REALMAP improves the quality of the decisions by visualising the impact of changes and scenarios instantly.

Target Markets

- First targets are the real estate companies in Western Europe;
- Further attractive markets include commercial and corporate real estate across Europe.



Status/ Traction

- REALMAP is well connected and has EIT as EU technology eco-system partner and EY, BDO and Arcadis as expert knowledge partners;
- REALMAP has several propositions:
 - As a platform service: REALMAP analyses are performed with client data by Bicore and/or by one of its expert partners;
 - License and supportive consultancy: REALMAP is acquired and implemented with the client for own use;
 - Supportive consultancy after implementation:
- Currently we are introducing REALMAP together with our partners in the social housing and commercial real estate market in the Netherlands and France.

Road Map

- Launch and roll-out in more countries across Europe;
- Further integrations with local source data providers;
- Development of partnerships to leverage knowledge and distribution;
- GDPR compliant scalable cloud deployment.

Connect



Guido Coopmans,
Activity Leader

e: Guido@realmap.com
t: + 31 6 57 73 59 60

Location

c/o
Bicore Services B.V.
Luchthavenweg 18C
5657 EB
Eindhoven
Netherlands



www.realmap.nl/

Realmap is an Innovation Activity proudly supported by EIT Digital

EIT Digital supports entrepreneurial teams from research and business organisations in launching new startups and new products in agile 12-month projects called innovation activities. These activities are embedded in EIT Digital's European ecosystem and receive a financial co-investment to package their technology, sign up customers and attract investors.